

APR '24 TO MAR '25

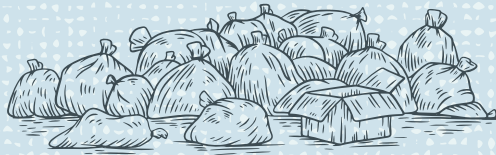
# THE YEAR at-a-glance

**SENIORS**



**146 clients**  
received avg. 8  
services each

**FOOD**



**302,420 LBS**  
of food diverted from  
the landfill

**24**



program  
volunteers



**\$587,859**  
value

recovered food  
donated to

**THIRTY  
-SEVEN**  
local programs



**2200**  
volunteer  
hours



**300**  
Angel Tree  
gifts given



**75 seniors**  
received  
housekeeping  
services

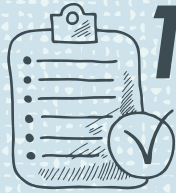
**73,240 lbs**



of food provided for  
animal feed



toy lending  
library  
borrowers



**182**

Affordable Child Care  
Benefit applications  
supported

## CHILDREN & FAMILIES

**217**

children with  
diverse abilities  
supported



**172**

prenatal  
vitamins  
given



**3573 times**  
Families attended  
Early Years programs



**228  
families**

served by Infant  
Development  
Program



**109**

lunches and  
snacks provided



**86 families**  
in parenting  
programs  
**6 parenting**  
classes



**163**

referrals for  
child care



**167**

families  
supported  
pre and  
postnatal

**24 kids**

attended  
after school  
care

**3318**

CAPC Cranbrook  
attendees

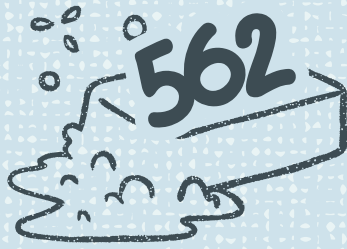
**1646**

CAPC Kimberley  
attendees

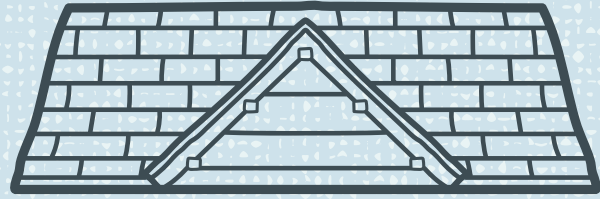




# HOUSING & POVERTY REDUCTION



**562**  
requests for hygiene items



**26,086 nights**  
stayed in the shelter



**212K**  
rental subsidies  
given



**179**  
**families**  
**housed**



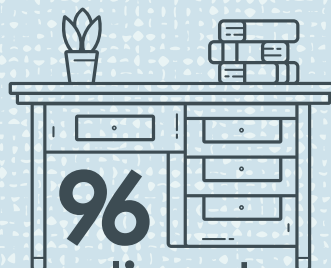
**94,688**  
shelter meals



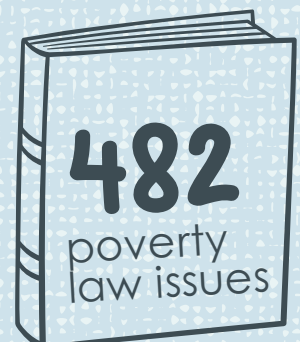
**447 hampers**  
of recovered food given

## LEGAL

**480**  
family law  
issues



**96**  
**clients**  
assisted with  
Legal Aid/info



**482**  
poverty  
law issues

**10** Holiday Hampers



**WOMEN**



**6 info hours**  
**6 workshops**  
**+ 7 support groups**

**158+**

menstrual product packages given

**900+ TIMES**  
help provided



**100+ GYM MEMBERSHIPS**  
supporting our Women's Resource Centre



**Enhancing the well-being of the diverse people in the East Kootenay region.**



**Community Connections**  
Community Connections Society of Southeast BC

[ccscranbrook.ca](http://ccscranbrook.ca) | 250.426.2976 | [reception@ccssebc.com](mailto:reception@ccssebc.com)