



Step Beyond Shelter
a Community Connections program



BC HOUSING

Participant **HANDBOOK**

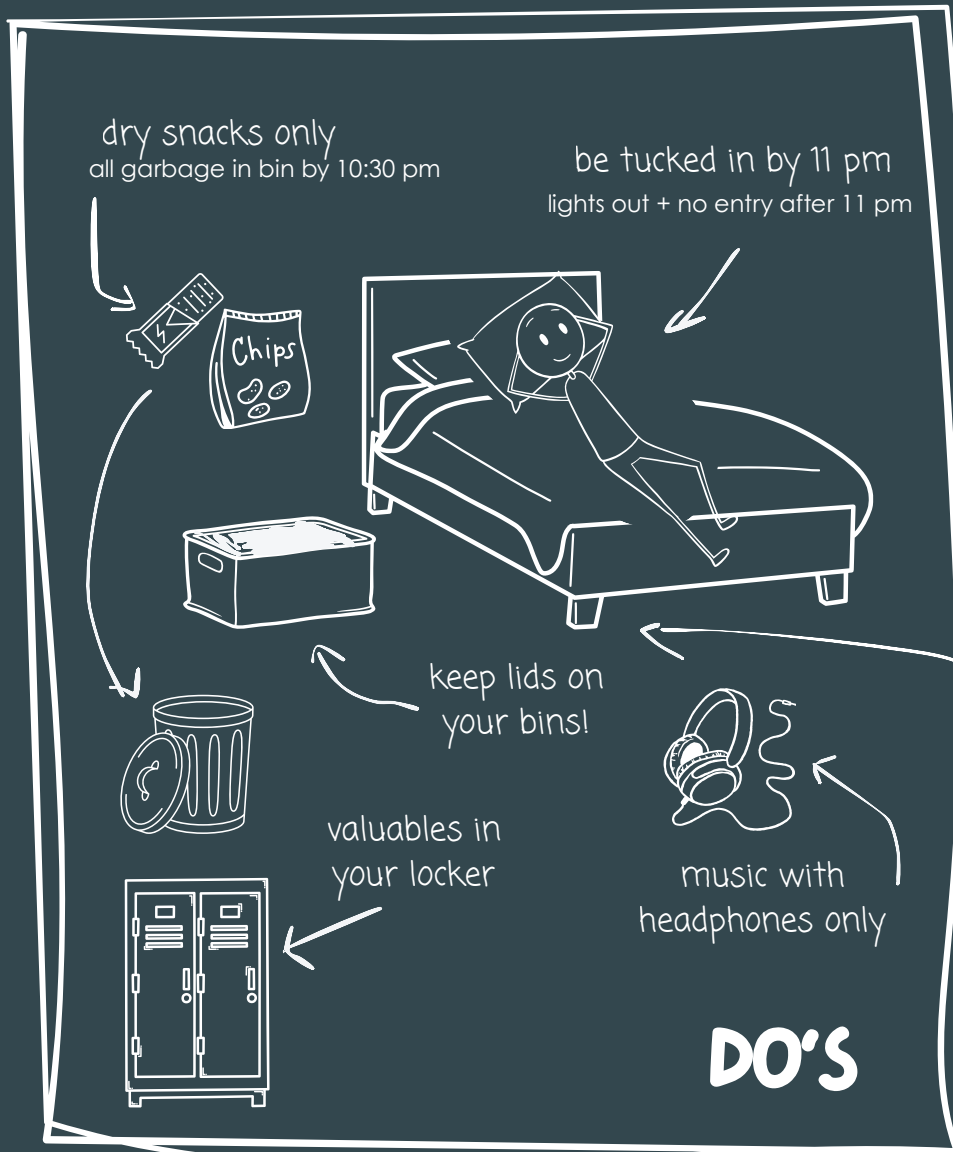
Remember: the pages inside this booklet might be fun, but the rules are serious.

Let's talk: **ENTRY WAY**



- 1 prohibited items can't be hidden from the wand search
- 2 weapons will be locked away and you can take them back when you leave.
- 3 trying to bring illegal weapons into the shelter will result in a call to the RCMP - our food is better so don't risk a night in a cell
- 4 sometimes we forget what's on us - staff will remind you what to hand in
- 5 we might not have room to store all your stuff - sorry
- 6 the entry way is small - wait patiently or we might not let you in

Let's talk: **BEDSPACE**



Let's talk: **HOUSEKEEPING**

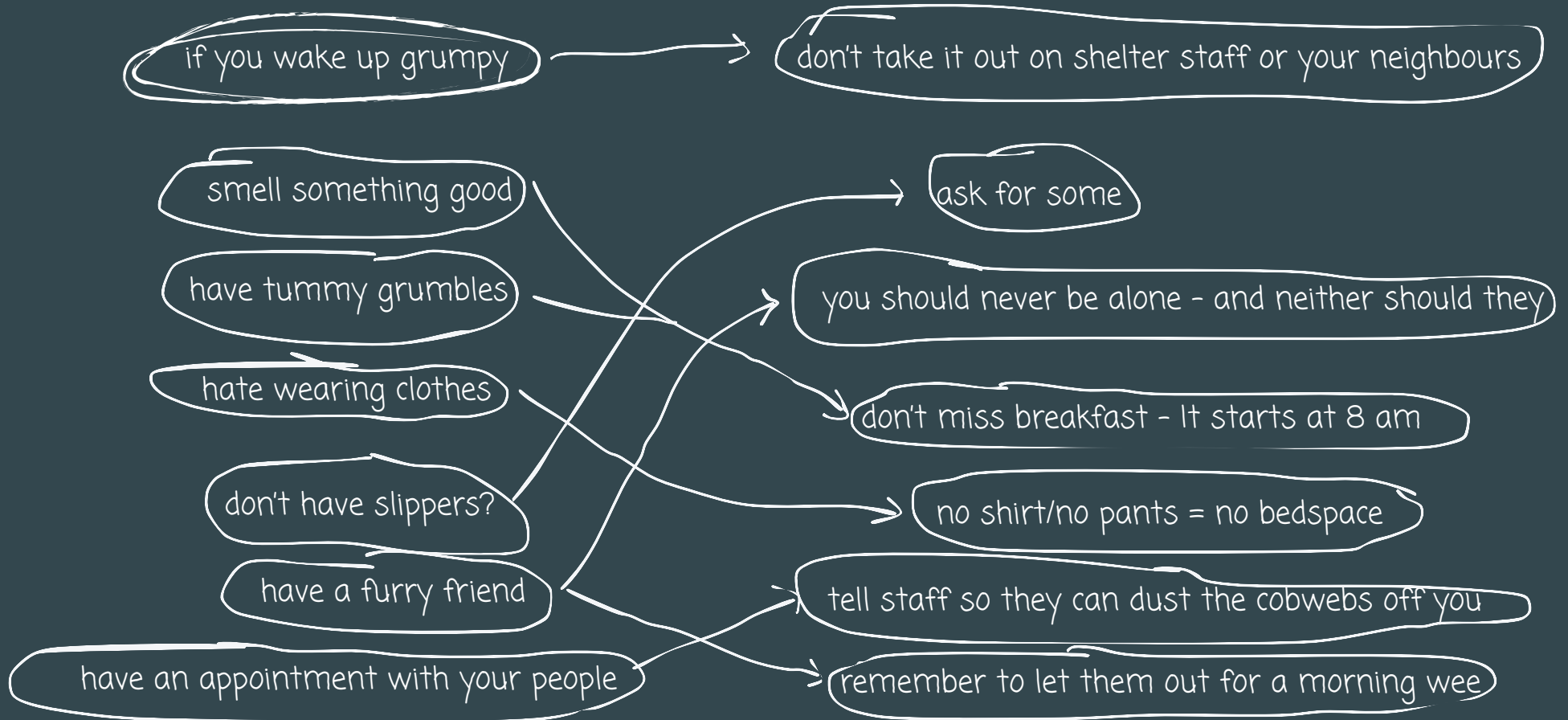


REMEMBER!

- if you make a mess - clean it up
- if you need cleaning supplies - ask for it
- if you don't know how to scrub a toilet - someone can teach you
- keep your bedspace clean

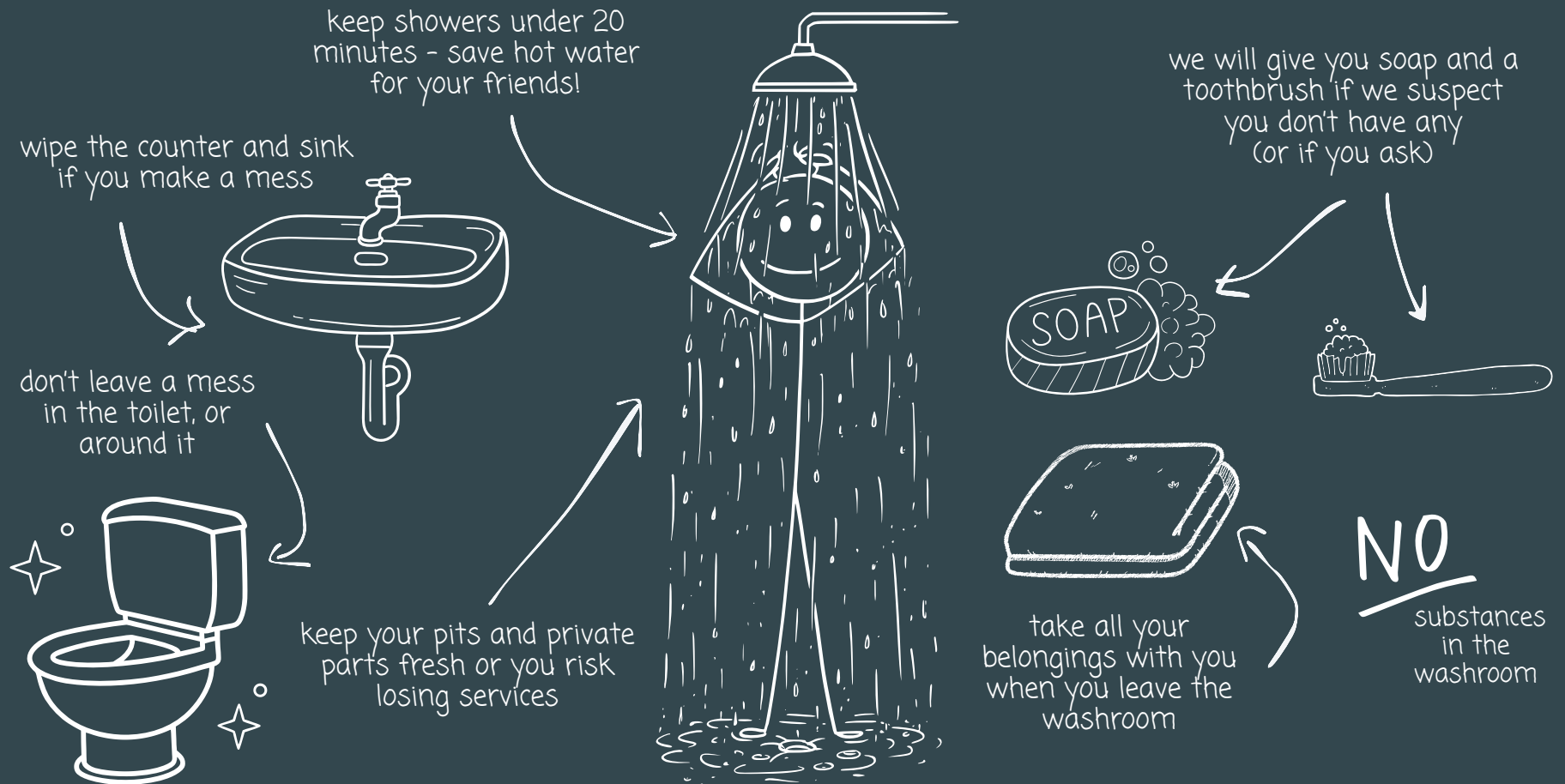
IF THIS...

...THEN THAT

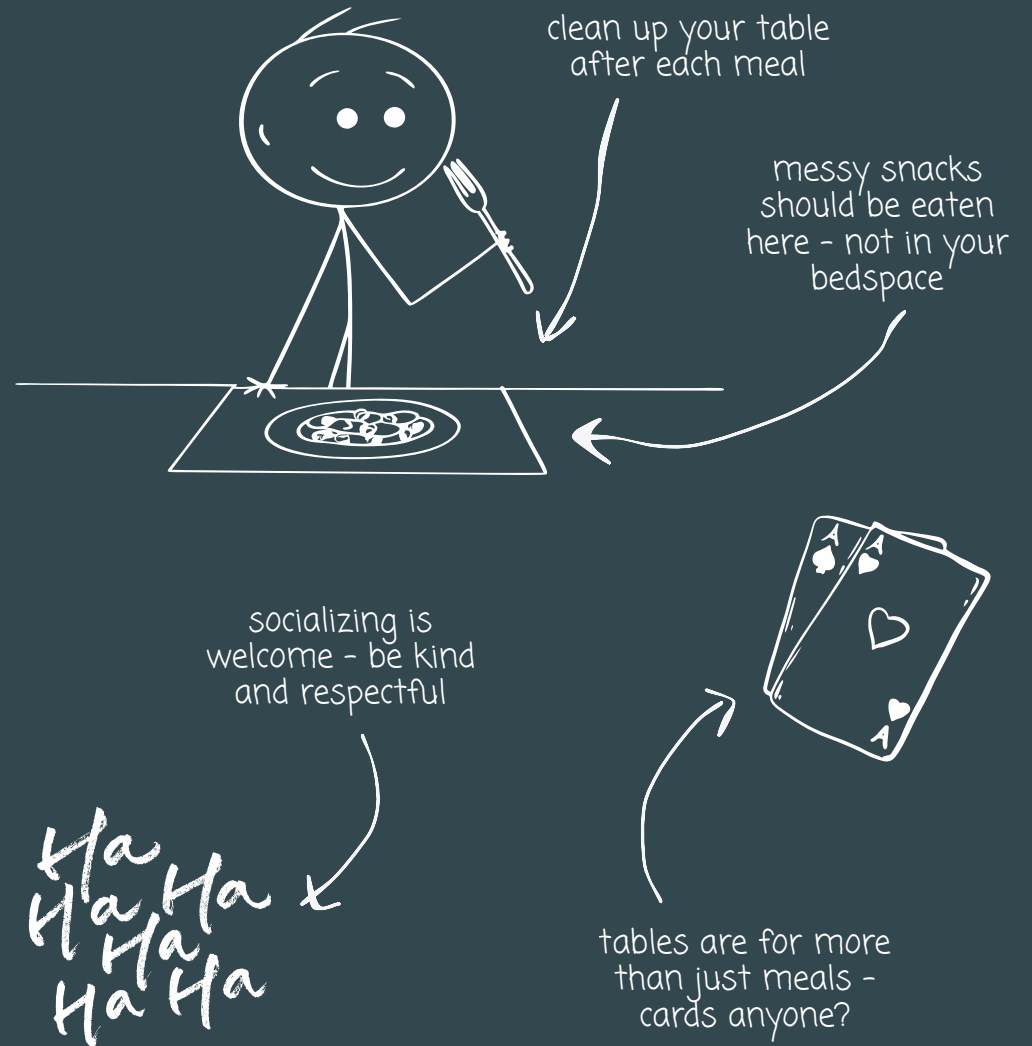
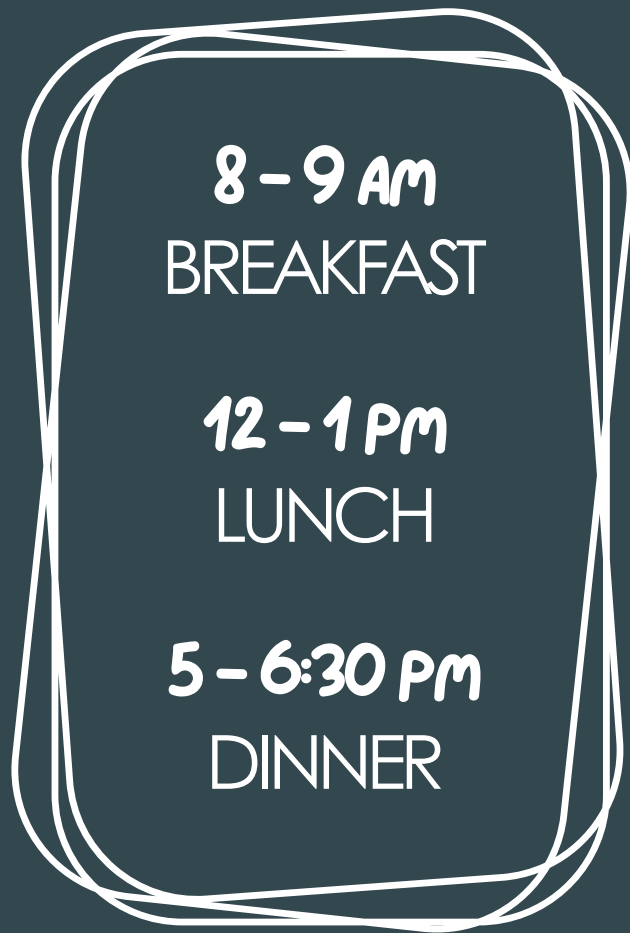


Let's talk: **MORNINGS**

Let's talk: WASHROOMS + HYGIENE



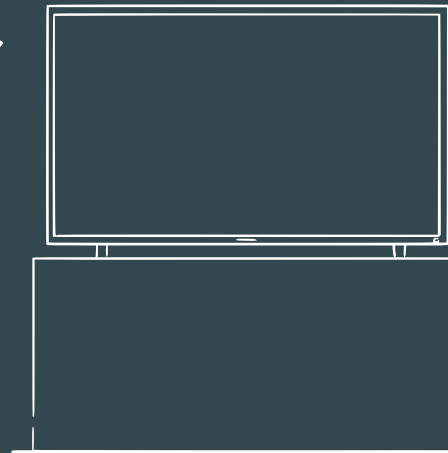
Let's talk: DINING SPACE



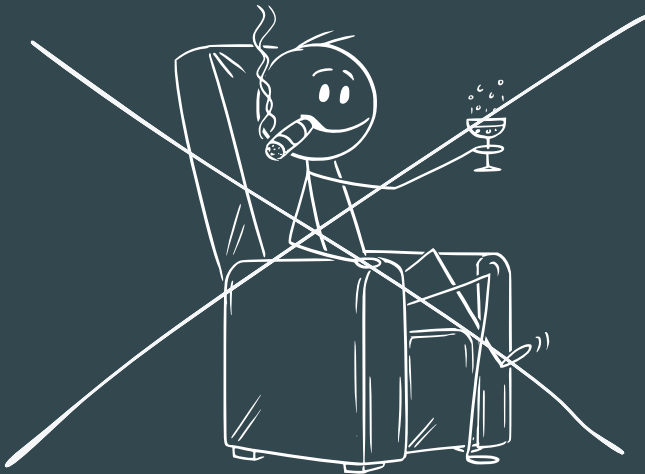
Let's talk: TV ROOM

this room is open from
7 am - 10:30 pm

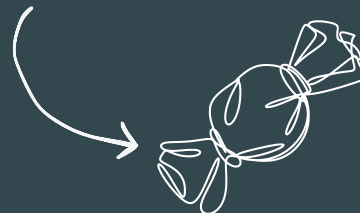
keep the volume at
a reasonable level -
others might not
like your show



no substances in
this space



leave NO evidence of
snacking here



after your movie or
episode, let someone
else have a turn to
watch something

Let's talk: **QUIET SPACE**

this room is open from
7 am - 10:30 pm



there may be pretty lights
- but no parties here

leave the room
how you found it



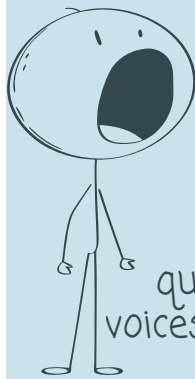
do a headcount -
three people only



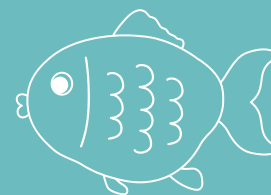
breathe
slowly to
calm yourself



chill out - and put
fidgets back where
you found them



quiet
voices only



watch the fish

Stay
Awake!

sleep is for
your bed

Let's talk: **BACKYARD**

DAYTIME - 7 am to 7 pm
maximum six people

NIGHT - 7 pm to 7 am
maximum three people

DO'S

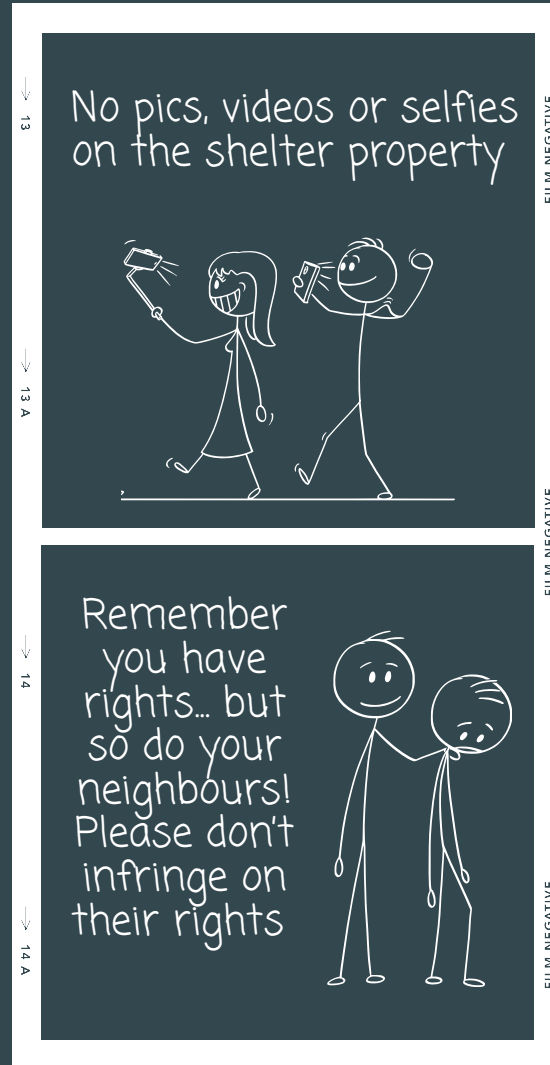
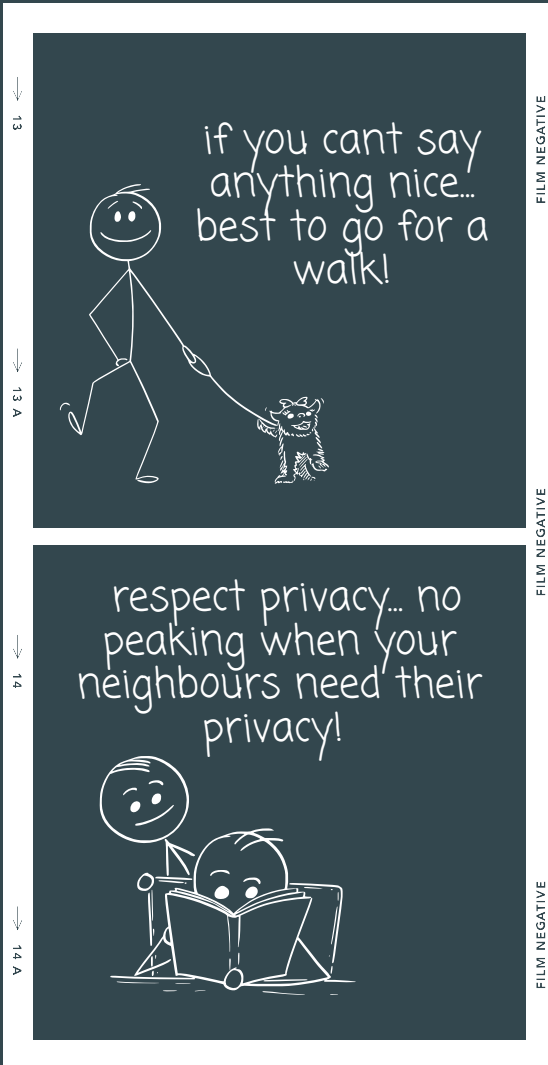
- hang out with your neighbours
- enjoy the sun
- 30-minute time limit
- head count (see max people above)
- put your garbage in the bin
- transport your "stuff" in a brown bag
 - ask staff if you need one
- put paraphernalia in the sharps bin

DONT'S

- don't yell over the fence
- don't climb the fence
- no selling or purchasing substances on or near property
- don't leave your stuff unattended
- don't leave garbage or paraphernalia
- don't stay more than 30 minutes



Let's talk: *BEING A GOOD NEIGHBOUR*



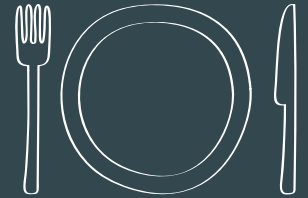
Let's talk: **PETS**

make sure your
furry friend gets
their needs met -
food, water,
bathroom breaks

dispose of pet
waste in the bin

need a poop bag?
we have some

keep pets out the
dining area - ask a
friend to watch
them while you eat



accident indoors?
clean it up and
prevent it from
happening again



cats and dogs only -
no chickens or
alligators please



Let's talk: **LEAVING THE SHELTER**



If you're not being nice to your neighbours or staff, you will be "invited" to leave. If you don't cooperate, our RCMP friends will "invite" you to leave too.

Remember all the stuff you packed here - be prepared to take it all when you go.

When in doubt, staff will throw it out!

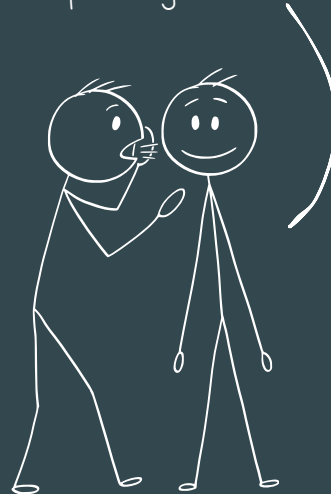
Check under your bed, in your side table, your locker, and the front office for anything you may have brought with you.

second chances are possible - a simple "sorry" goes a long way
maybe we will see you again - ask staff how long to wait until coming back

it's nice to say "good morning" to the people you pass on the sidewalk!



save your chit chats for the shelter yard or dining room - don't loiter in the parking lot

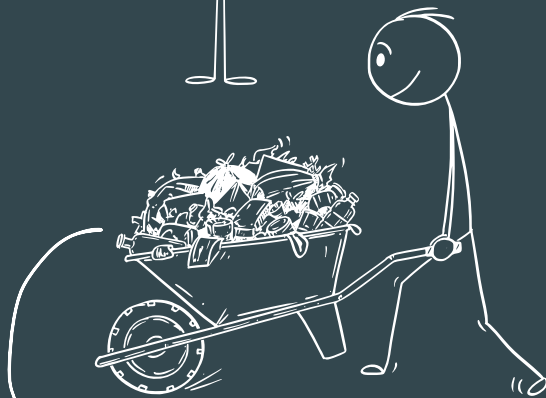


no parking lot demonstrations - show off your mechanic skill somewhere else



your track + field days are OVER - stay out of the Mount Baker yard

keep the neighbourhood clean - pick up trash even if it's not yours



Let's talk: **PARKING LOT + NEIGHBOURHOOD**

Let's talk: **BIKES**



can I bring a bike to the shelter that's not mine?

NOPE

If my neighbour has a cool bike - can I touch it?

No - hands off others' stuff

Can I store extra bike parts at the shelter?

NOPE

should I register my bike with the 529 garage app so the RCMP know it's mine?

YUP

can I ride my bike inside the shelter?

uhhhh.... NO

Can I attach a spare tire to my bike?

No - we don't want neighbours asking questions

Can I store my broken bike at the shelter?

No - working bikes only

Can I have multiple bikes at the shelter?

No - one bike per person

thank you
**FOR BEING A GOOD
NEIGHBOUR**

we want you to be able to stay until you can step beyond shelter